

Project Sheet

Silhouette Garden Fairy Pillow

by Bonnie Benjamin

You will need:

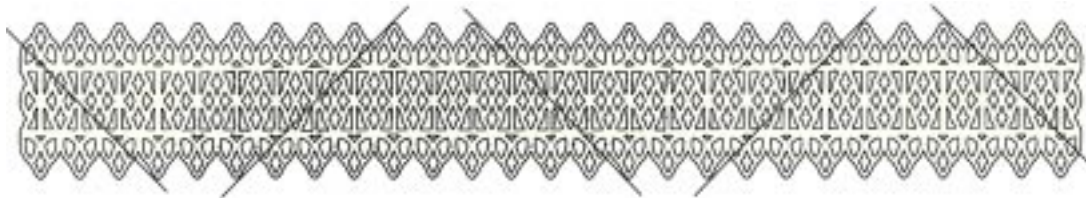
- 1 Creative Iron™ Windsor Lace Border in Black #C1011
- 1 Creative Iron™ Large Garden Fairy (I used #C0208)
- 18" x 36" background fabric of your choice
(I used Fairy Frost in Periwinkle from Michael Miller)
- 1 18" pillow form
- Iron
- Teflon pressing sheet, or other non-stick pressing sheet



Directions:

Cut background fabric into 2, 18" x 18" squares. These will be the front and back of your pillow. Prewash, if desired. Do not use fabric softener. Iron. Open the Creative Iron™ packages and read all the directions first. Cut the Windsor Lace Border as shown in the diagram below. Peel paper backing. Lay out the 4 border pieces on the pillow top as shown in the photo below. They will not extend to the edges. When you are satisfied that the border pieces are correctly positioned, cover with pressing cloth and press on medium for about 5 seconds. Press up and down, not side to side. This will form a temporary bond. Peel paper backing from the fairy, following instructions and center on pillow top. Press in place as above. When pillow top is completed, cover with pressing cloth and thoroughly press all parts for at least 10 seconds on both the front and back, checking to be sure all edges are secure. Assemble pillow in a 17" square which gives a nice, full looking pillow when stuffed with an 18" pillow form.

Cutting diagram for creating 4 border pieces



Lay out fairy and 4 border pieces as shown.



Detail showing how to trim overlapping borders

